

Building a Sustainable Community in Alachua County

Location of Suitable Sites for Three State of the Art Women and Children Community
Centers

Compiled by Team Five: Danielle Abbey, Campbell Grace, Hoang-Vi Ho, Stephen Novak, Thomas Spoto
Spring 2011

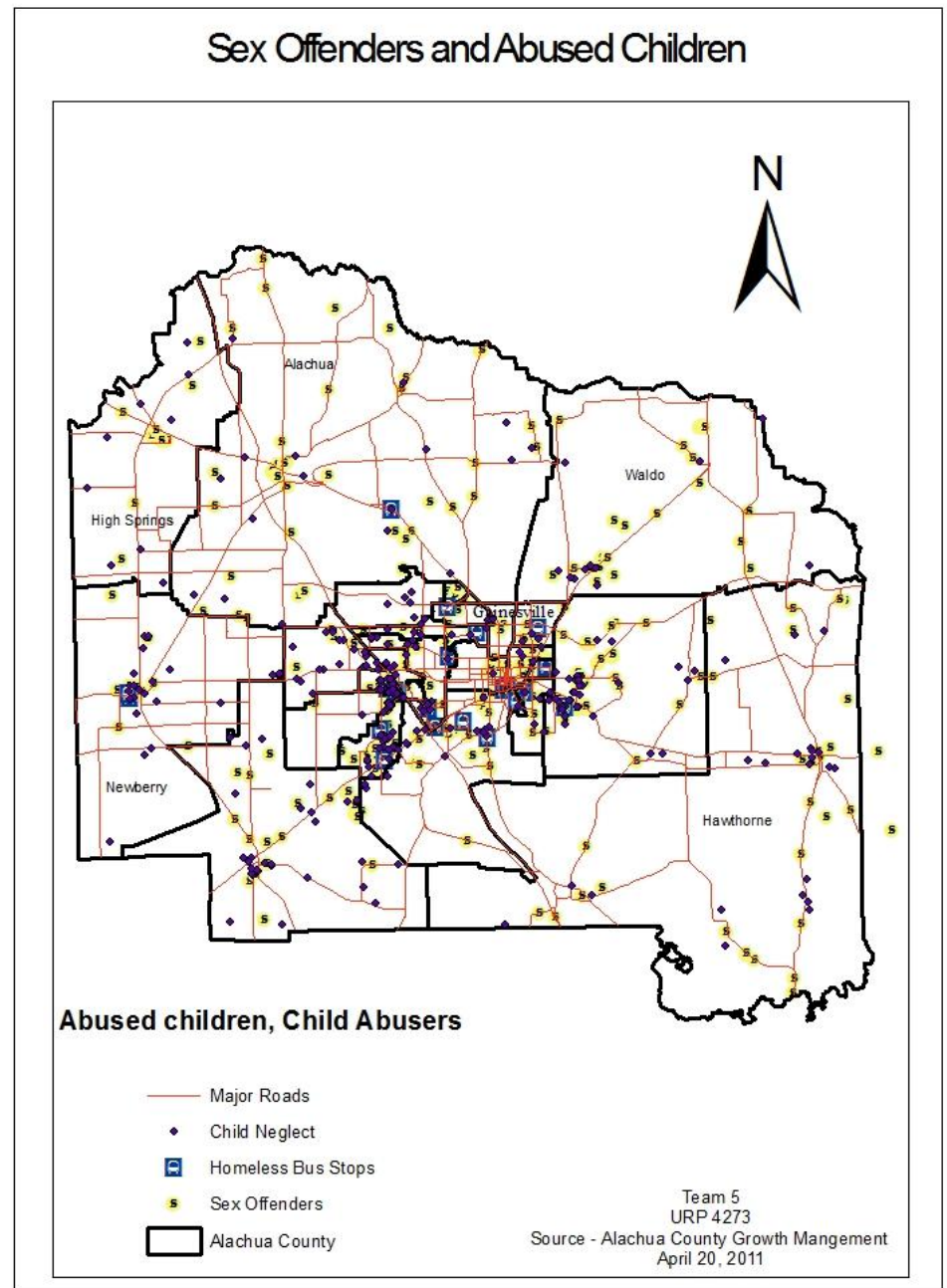


Quick Facts of Alachua County

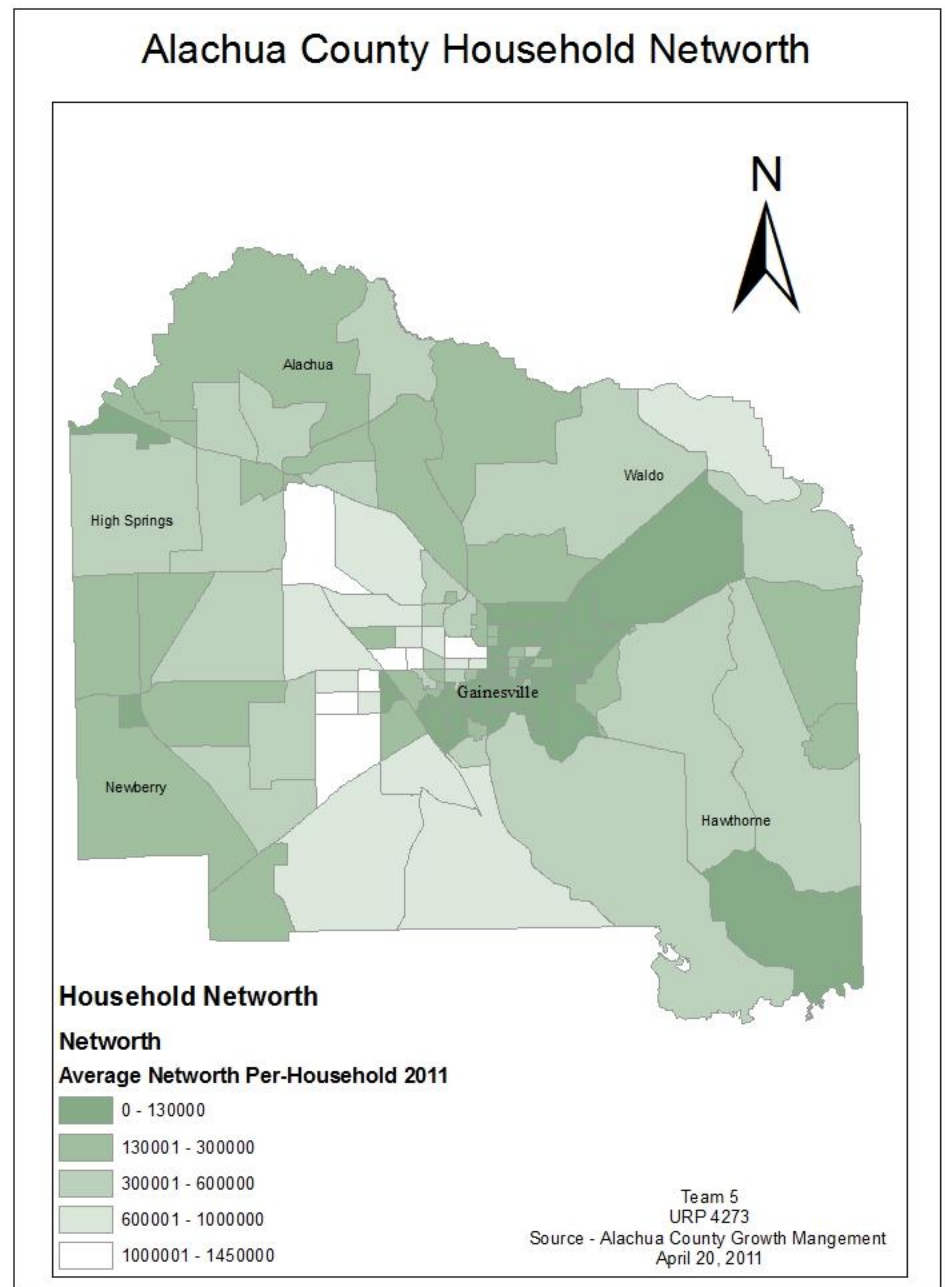
- County seat: Gainesville
- Largest city: Gainesville
- County population in July 2009: 243,574 (75% urban, 25% rural)
- Estimated median household income in 2009: \$38,019
- Florida: \$44736
- Percentage of residents living in poverty in 2009: 24.2%
- Florida: 14.9%
- Alachua County had 1200 documented cases of child abuse in 2010. Which is twice the state average.

Began with using such data as:

- child neglect shapefile
- homeless bus stop shapefile
- sex offender address shapefile.
- We want to keep our community centers near these locations, but not too close to sex predators and child abusers.

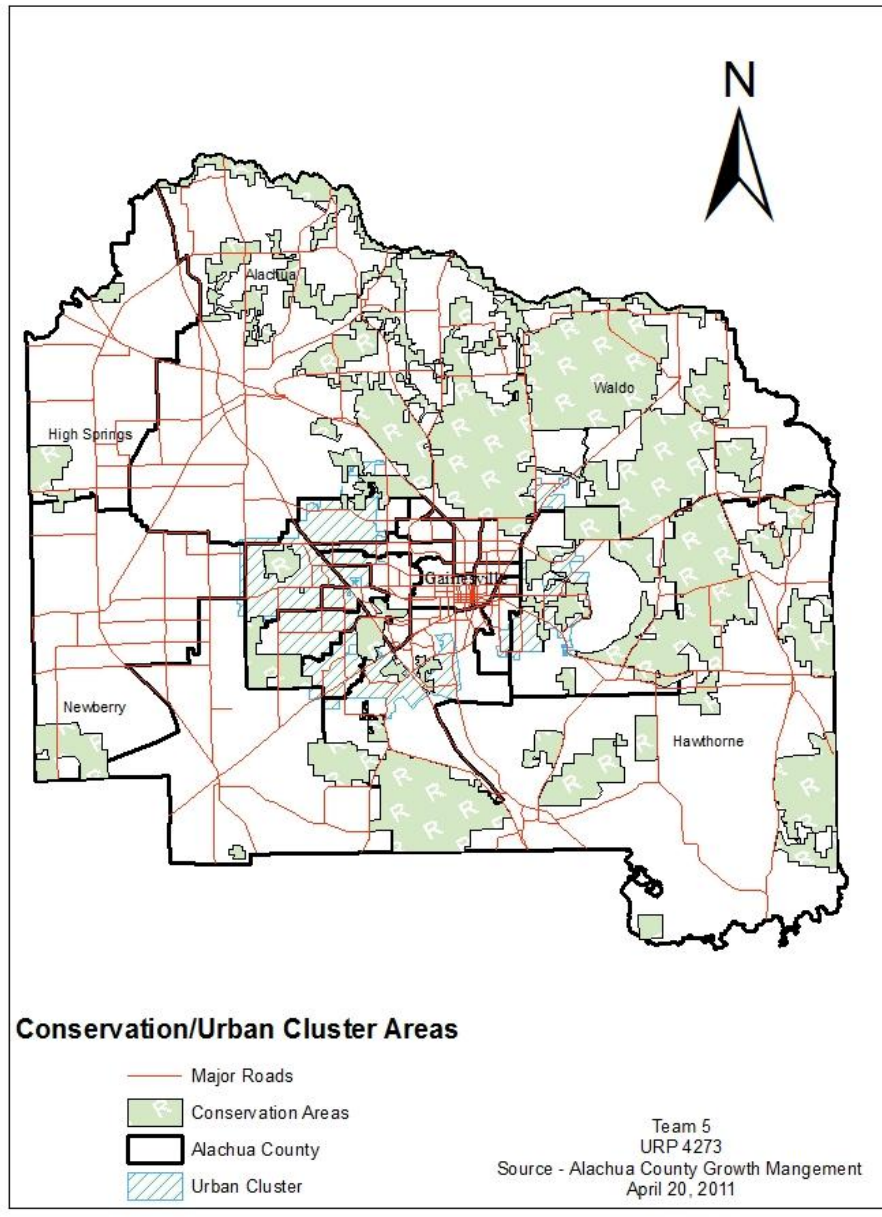


Chose the Household Net worth Shapefile to understand the average net household income throughout Alachua county. There is no sense in building a community center to provide services that people already have or can afford.



Conservation Areas and Urban Cluster in Alachua County

We used the Conservation Area shapefile to find areas that were not suitable for building throughout Alachua County. Urban cluster was also a good barometer for studying population density.



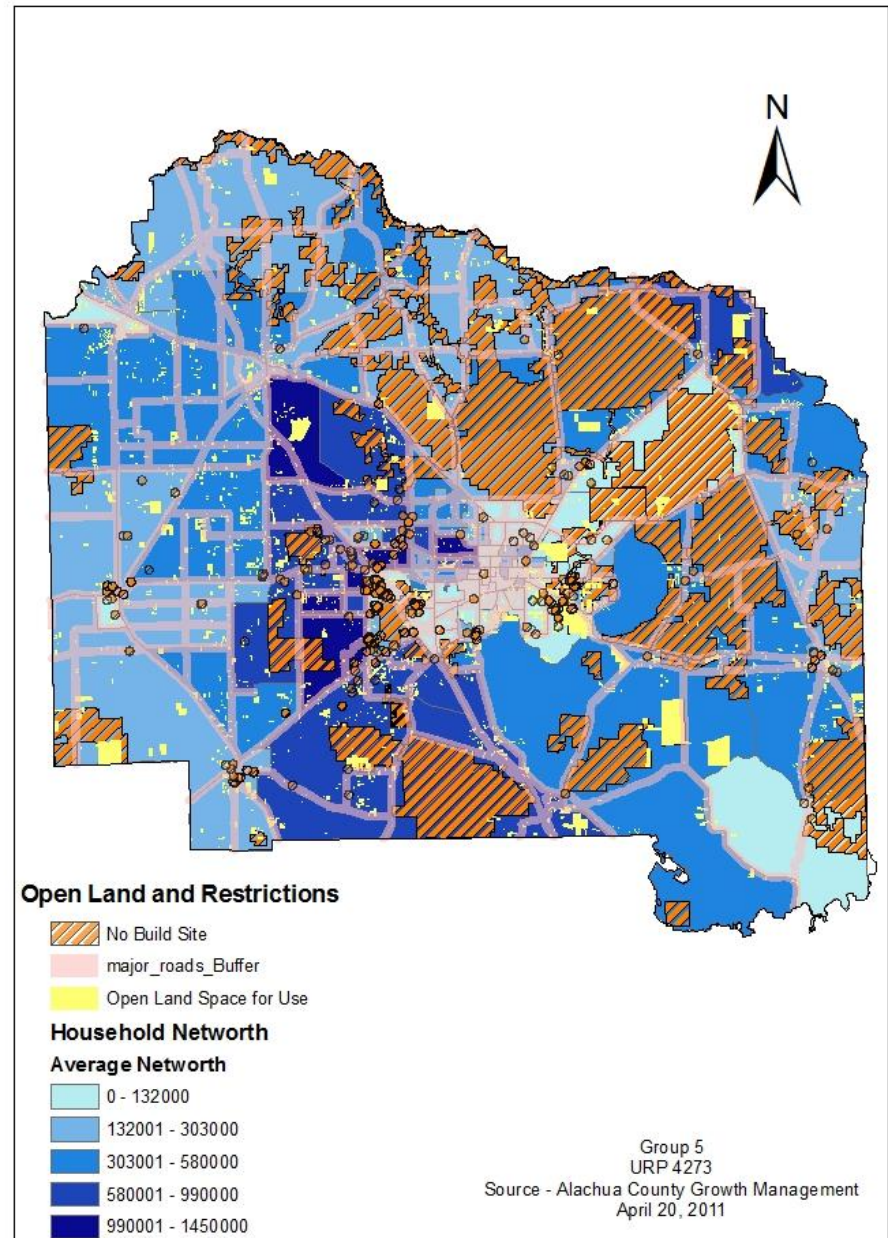
We combined such shapefiles:

- conversation areas
 - sex offenders
 - child neglect
- } “No Build Sites”

We added in buffers at 1000 ft from major roads, bike paths, and trails. We also buffered sex offenders and child neglect cases at 1000 ft, which by law in the State of Florida, child abusers and sex offenders must stay at least 1000 ft away from child facilities.

Finally open land space parcels for mixed use residential were added to see where potential sites would be available.

Open Land Parcels for Construction



The Community Center:

The ideal community center would include the following:

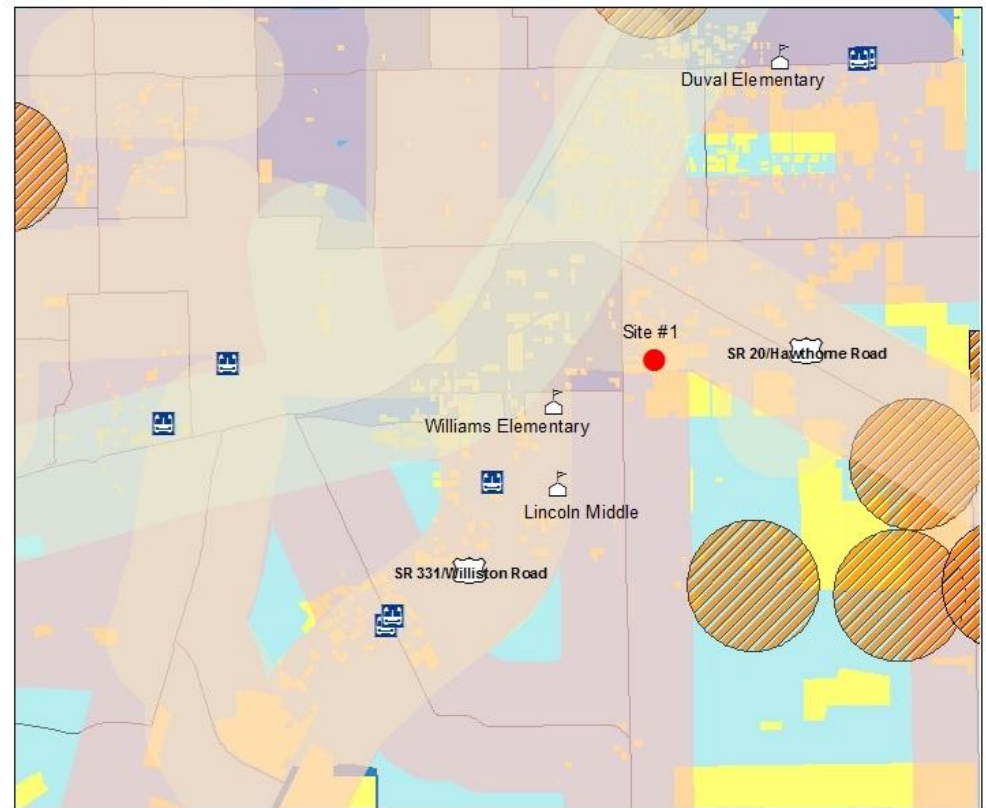
- Security
- Kitchen/shower/beds
- Recreation
- Computers/Internet
- Food/Medical care
- Counselors
- ASO resource officers
- Therapeutic
- NEEDS TO BE INVITING



Potential Site #1 was located in the Lincoln Heights Neighborhood in East Gainesville.

- African American and Low income.
- Child Neglect and Sex offender cases were scattered throughout the neighborhood, more prominent towards the east side.
- Benefits:
 - Along with child neglect and sexual abuse, homeless child activity was noticed at many RTS stops
 - minutes from public, elementary & secondary schools
 - accessible from automobile, bike, foot and RTS transit routes.

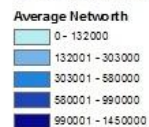
Proposed Site # 1



Open Land and Restrictions

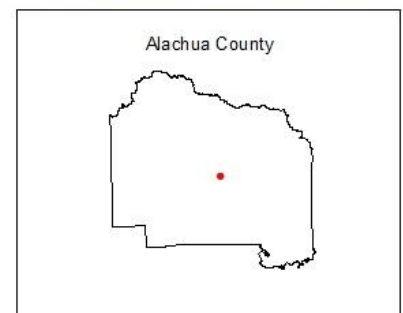


Household Networth



0 0.5 1 Miles

1 in = 1 miles

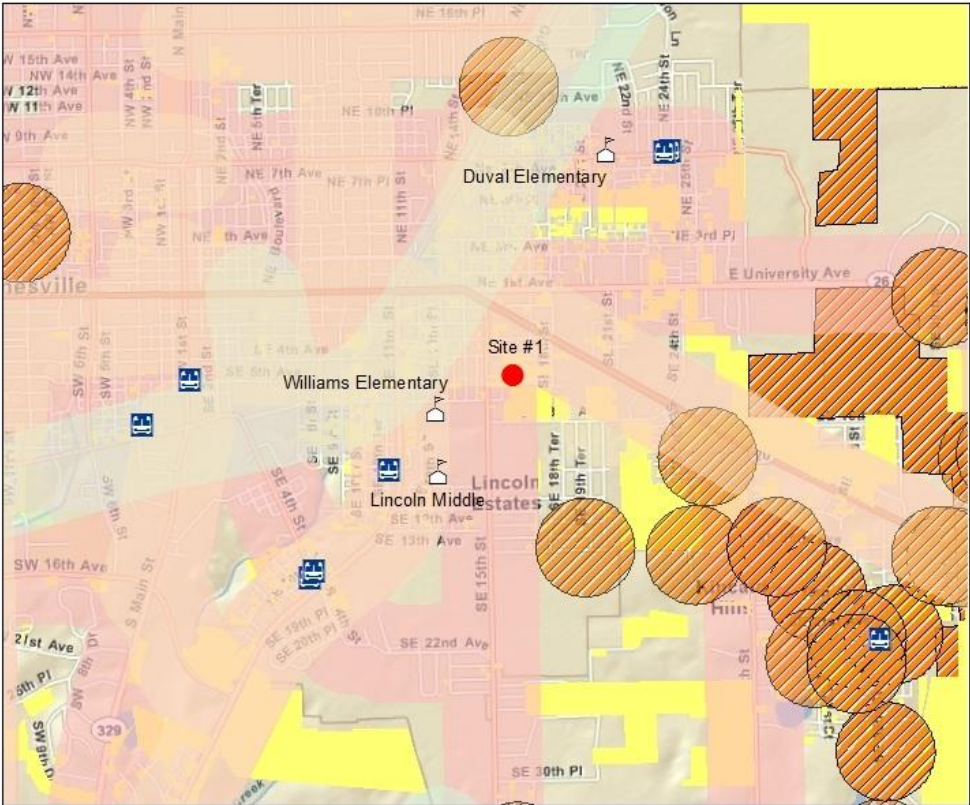


Alachua County


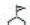
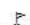






Group 5
URP 4273
Source - Alachua County Growth Management
April 20, 2011

Proposed Site # 1

This map includes a map layer rather than Average Net Worth Income per household.



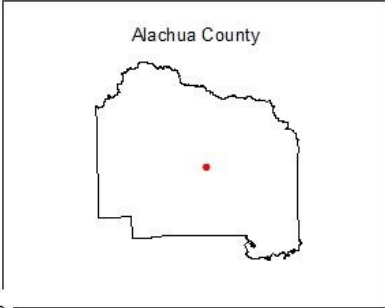
Open Land and Restrictions

-  homelesschldr_busstop
 -  al_schools_high
 -  al_schools_middle
 -  al_schools_elem
 -  al_bikepaths_Buffer
 -  al_trailspaved_Buffer
 -  No Build Site
 -  major_roads_Buffer
 -  Open Land Space for Use
- World Street Map



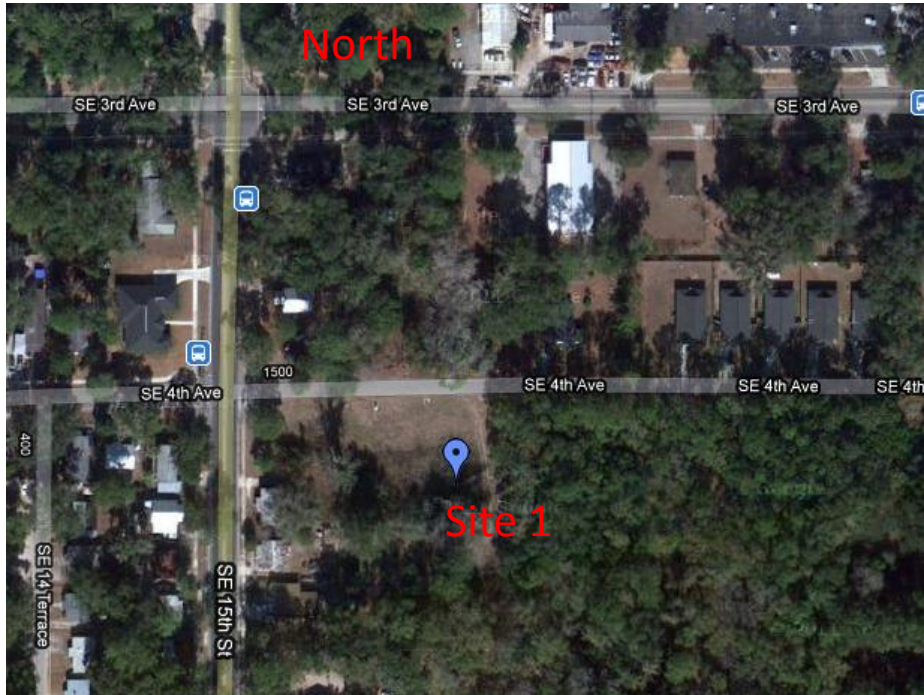
0 0.5 1 Miles

1 in = 1 miles



Alachua County
 Group 5
 URP 4273
 Source - Alachua County Growth Management
 April 20, 2011

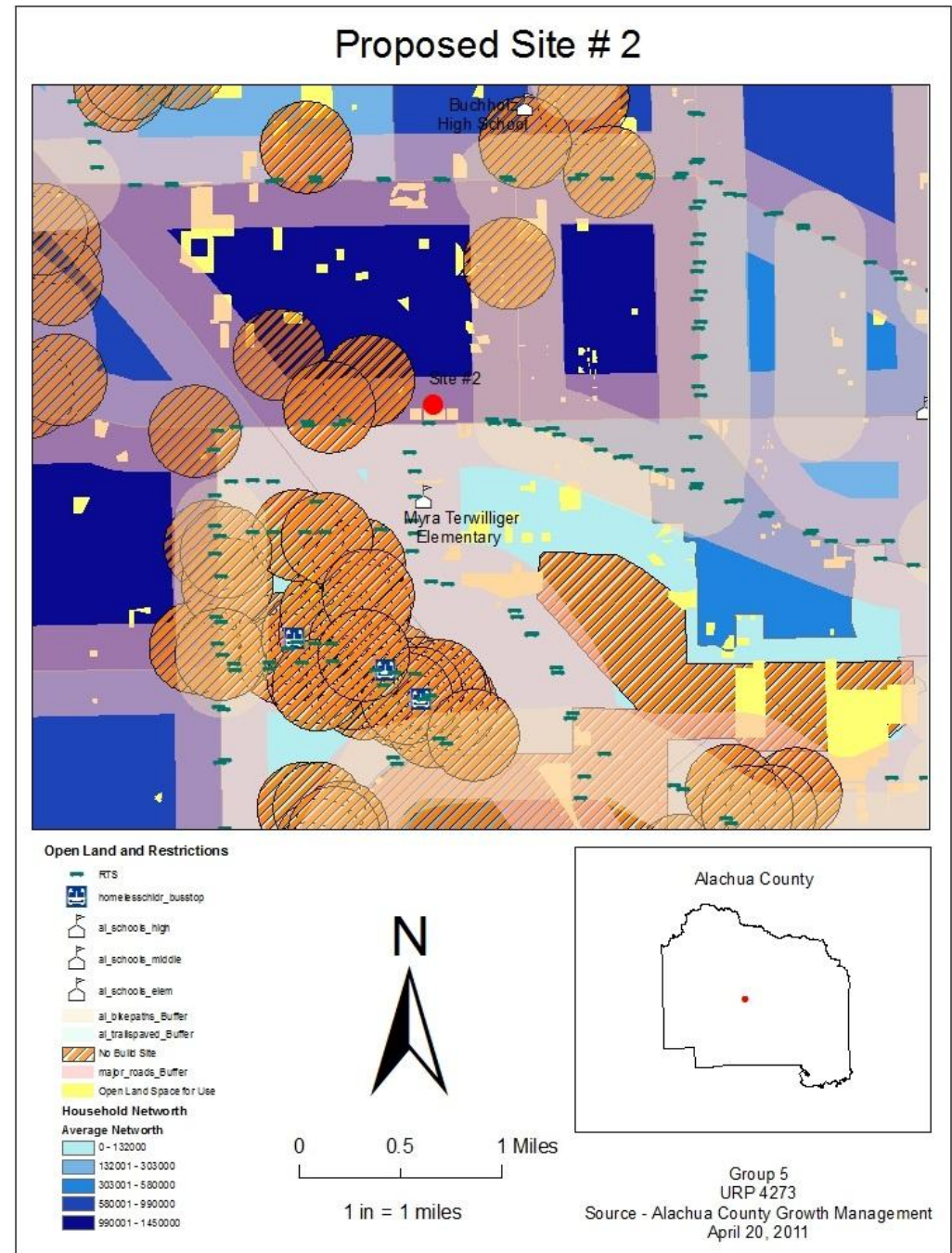
Site #1
SE 15th Street and SE 4th Ave
Gainesville, Florida



- Neighborhood, Mixed Use
- Paved Roads
- RTS Bus Routes 2, 7
- Minutes from Lincoln, Williams, and Duval public schools
- Low income neighborhood

Proposed site #2 was proposed off West Newberry road near the Oaks Mall.

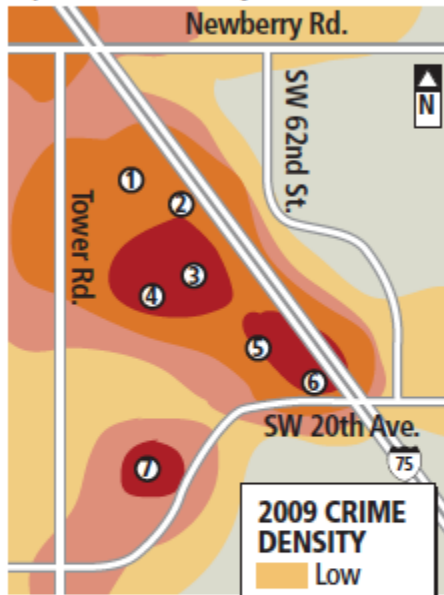
- The site was chosen to help with the Large poverty and crime ridden tower road area.
- Alachua County Sheriffs have designated the tower road neighborhoods the MIKE zone.
- Benefits:
 - minutes from Buchholz high school and Myra Terwilliger Elementary public schools
 - away from high densities of crime, which provides the occupants a safe place to reside.
 - accessible by RTS routes 5, and 75



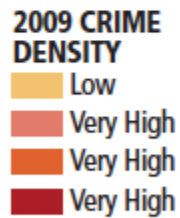
MIKE Zone, Alachua County

Troubled neighborhoods

Neighborhoods within the "Mike Zone," which accounts for the most calls for service and the most crime reports in the county.



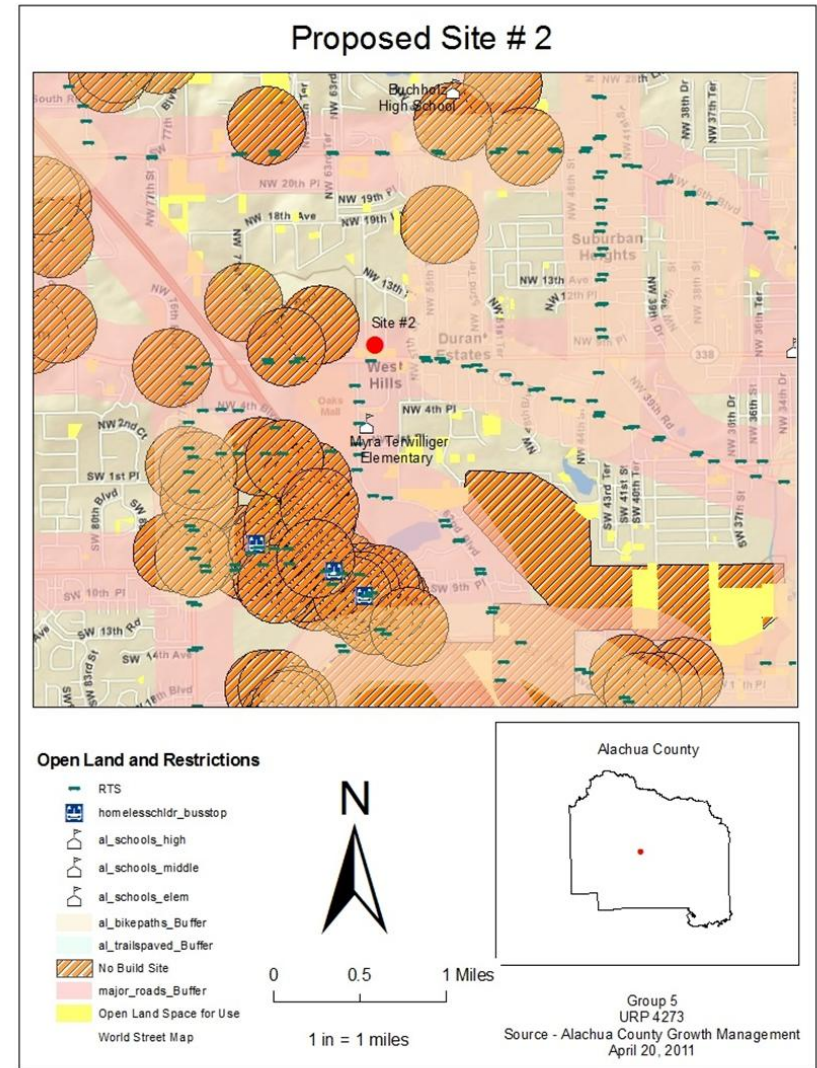
- 1) Pine Meadow
- 2) Harbor Cove
- 3) Cornerstone Mobile Home Park
- 4) Holly Heights/Gordon Manor
- 5) Linton Oaks
- 6) Majestic Oaks
- 7) Tower Oaks



SOURCE: Southwest Advocacy Group
ROB MACK/Staff graphic

Alachua County sheriff's officials say "Mike Zone" — the name for the geographical area that includes many of the poorest neighborhoods

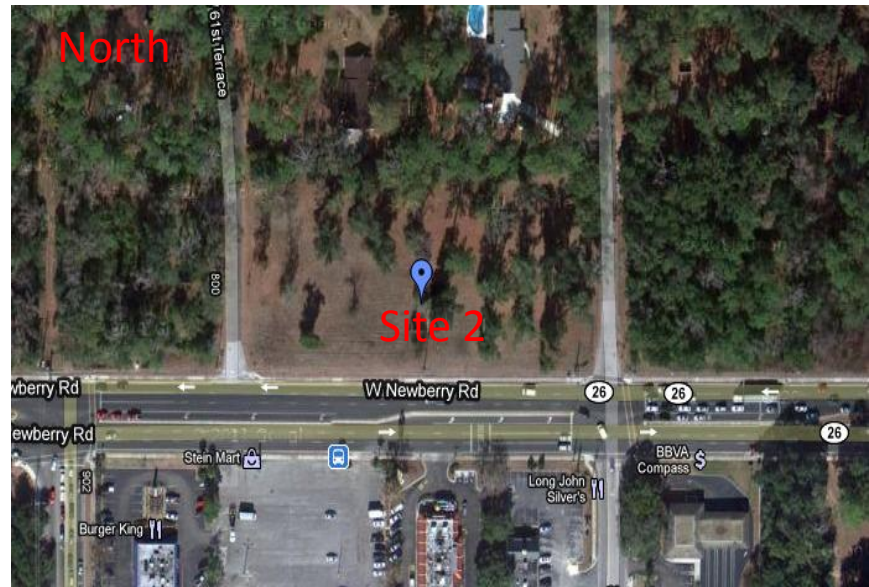
Crimes include "Domestic violence, narcotics violations, burglaries, robberies" (ASO Lt. Bella Blizzard)



Site #2

W Newberry Rd and
NW 62th Street
Gainesville, Florida

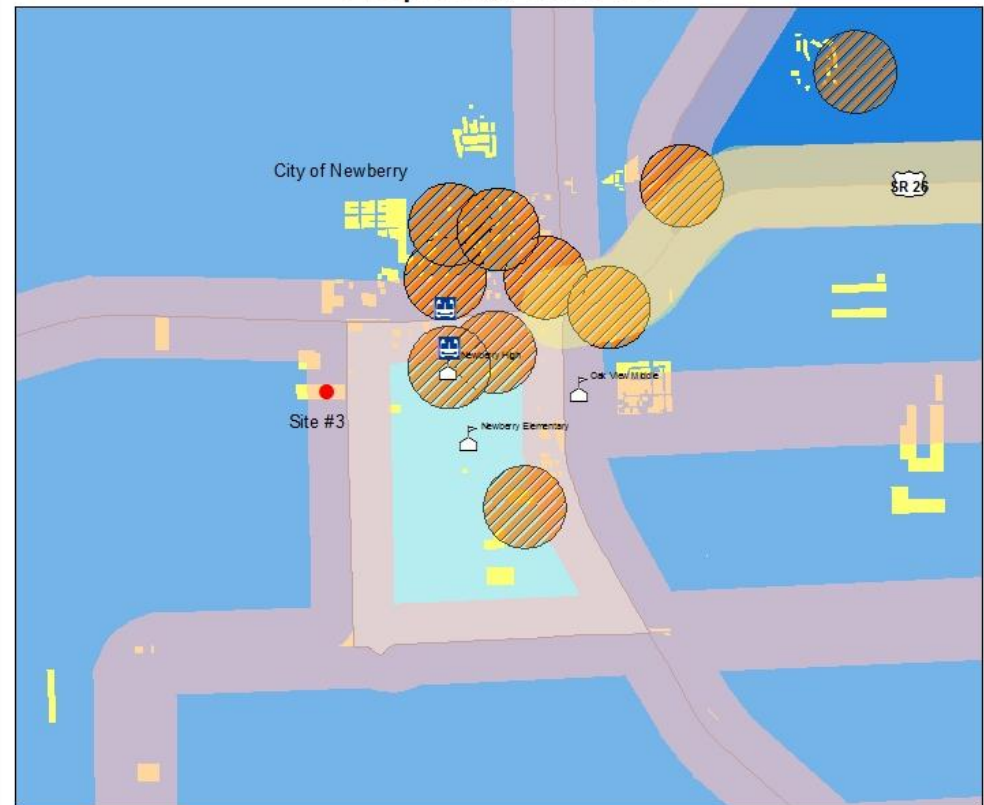
- Off a main street
- RTS routes 5, 75
- Minutes from Terwilliger Elementary
- Minutes from many crime, sex offenders, and child neglect addresses for a getaway from troubles at home.



The third and final proposed site is located in the City of Newberry.

- neighborhood's low income rates and the near by density of child neglect and sexual abuse cases.
- Approx. 1 mile to all 3 of Newberry's public schools
- within a neighborhood and off a paved road for access.
- mile from bike routes off Newberry road.

Proposed Site # 3



Open Land and Restrictions

- homeless/ldr_busstop
- High School
- Middle School
- Elementary School
- Bike Path
- Trails
- No Build Site
- major_roads_Buffer
- Open Land Space for Use

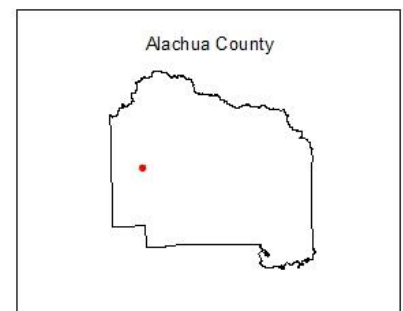
Household Networth

- Average Networth**
- 0 - 132000
 - 132001 - 303000
 - 303001 - 580000
 - 580001 - 990000
 - 990001 - 1450000



0 0.5 1 Miles

1 in = 1 miles



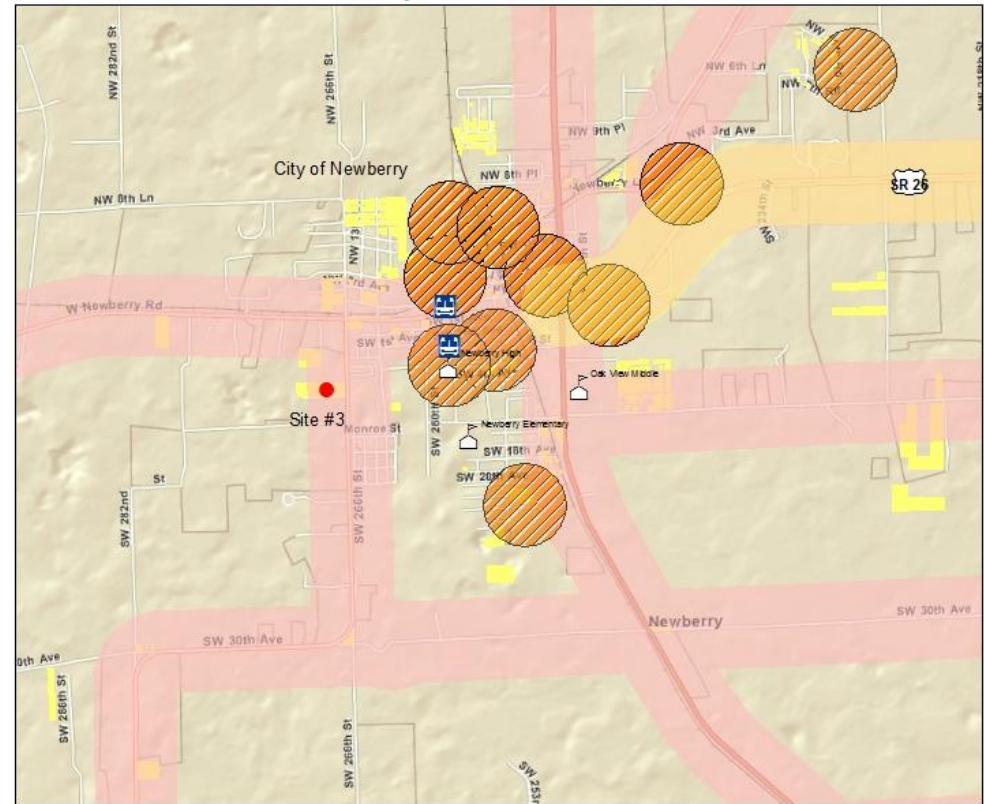
Alachua County

Group 5
URP 4273








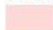

Source - Alachua County Growth Management
April 20, 2011

This map includes a map layer rather than Average Net Worth Income per household.

Proposed Site # 3



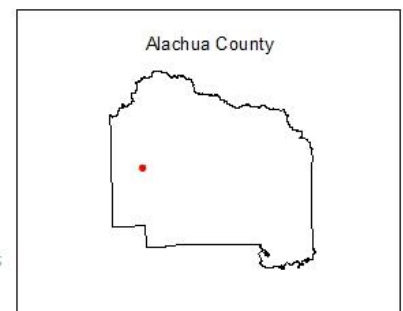
Open Land and Restrictions

-  homelesschldr_busstop
-  High School
-  Middle School
-  Elementary School
-  Bike Path
-  Trails
-  No Build Site
-  major_roads_Buffer
-  Open Land Space for Use



0 0.5 1 Miles

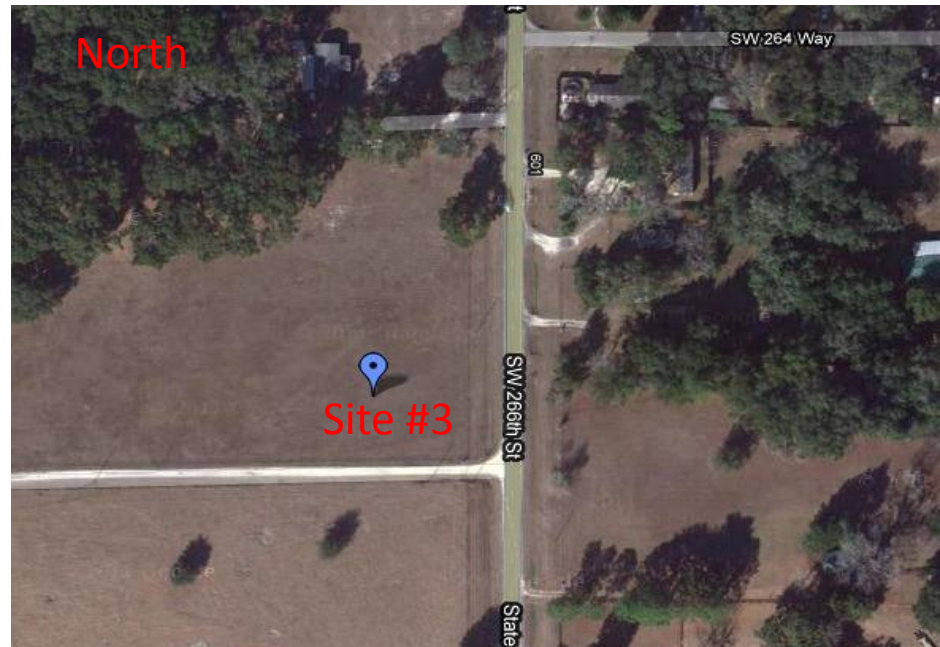
1 in = 1 miles



Group 5
URP 4273
Source - Alachua County Growth Management
April 20, 2011

Site #3
SW 266th Street
Newberry, Florida

- Low Income Neighborhood
- Minutes from West Park, and Newberry High School
- Mile or less from other schools
- Right off a paved road
- Minutes from homeless children bus stops



Questions?

